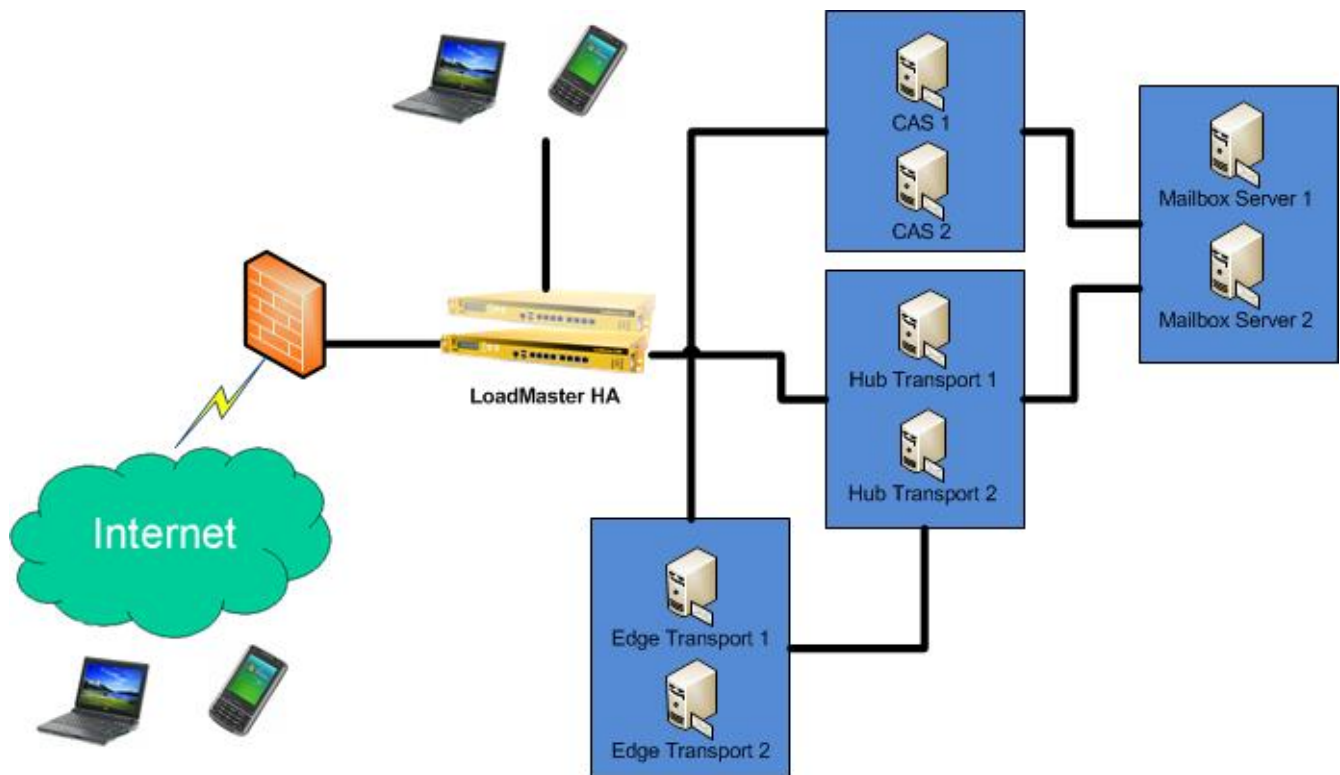


## Load Balancing and High Availability Appliance, Purpose-built for Microsoft Exchange 2010



The LoadMaster<sup>Exchange</sup> (LM-Exchange) is an advanced, Layer 4/7 Load Balancing appliance, purpose-built for Microsoft Exchange 2010. The LM-Exchange is designed to address high-availability and scalability demands of Microsoft Exchange 2010 deployments for businesses up to 250 users. To simplify installation, the LM-Exchange is optimized for the most commonly deployed Exchange 2010 server roles, providing instant redundancy and high-availability for client access server (CAS) and other critical Exchange 2010 services. The LM-Exchange comes pre-configured with 4 virtual services supporting RPC Client Access (MAPI), SMTP, as well as SSL-encrypted services such as Outlook Web Access, Outlook Anywhere and ActiveSync. LM-Exchange includes all the key functionality that the typical Exchange 2010 deployment will require, including distribution of traffic load across up to six servers, CAS server affinity (persistence), SSL offload and application service and server hardware health checking with automatic failover upon detection of outages.



The LM-Exchange supports up to 13 Virtual Services and 6 Real (physical Servers)



### Standard

- Server Load Balancing (SLB) for TCP/UDP based protocols
- SSL Acceleration/Offload in ASIC
- Layer 7 Content Switching
- Advanced, App-Transparent Caching Engine for HTTP/HTTPS protocols
- Optimized Compression for Static and Dynamic HTTP/HTTPS Content
- Layer 7 Intrusion Prevention System (IPS), SNORT-Rule Compatible
- Up to 500 Virtual and 1000 Real Servers
- IPv6 support for addressing and features
- IPv6 - IPv4 bidirectional conversion
- NAT-based forwarding
- Support for Direct Server Return (DSR) configurations
- Support for MS Terminal Services with Session Reconnection Built-in
- Configurable S-NAT support
- VLAN Trunking (802.1Q)
- Link Interface Bonding (Modes supported: 802.3ad, Link Failover)

### Performance

- Max Balancer L4 Throughput Up To 950 Mbps
- Max Balancer L7 Throughput Up To 920 Mbps
- Max Interface Throughput 4 X 949.2Mbps
- 25,000 L7 (http) requests per second
- 50,000 L7 concurrent connections
- 1,000,000 L4 concurrent connections
- SSL Acceleration Up to 200 TPS

### SSL

- ASIC-enabled, SSL Acceleration w/ support for 2048bit RSA Keys
- Support for EV (Extended Validation) Certificates
- PCI-DSS ready SSL Implementation
- Support for up to 256 SSL Certificates
- Support for Third Party Certificates
- Automated SSL Certificate Chaining
- SSL Certificate Signing Request (CSR) Generation
- STARTTLS offload for mail protocols (POP3, SMTP, etc.)
- FIPS 140-2 Level 1 capable

### Health Checking & High Availability

- ICMP health checking of server farm machines
- Layer 7 checking for DNS, FTP, HTTP, IMAP, NNTP, POP3, SMTP, WTS (RDP), TELNET
- Automatic reconfiguration for defective real server machines
- Active/Hot Standby configurations for High Availability
- Stateful Failover

### Administration

- Fully configurable using Web User Interface (WUI)
- Secure, SSH and HTTPS (WUI) remote access for administration
- Easy start and maintenance using wizards
- WUI-based Help Assistant
- Virtual Service Configurations can be edited and tuned on-the-fly
- Real time performance and availability displays
- Preconfigured Applications templates



- Console port for local administration
- Remote syslogd support
- Selective restore of LoadMaster and Virtual Service data
- Support for Connection Draining
- Download software updates for LoadMaster firmware
- WUI Log Reporting with Tabbed Browser Support
- SNMP support for event traps & performance metrics
- Diagnostic shell with in-line tcpdump

### Scheduling and Balancing Methods

- Round Robin
- Weighted Round Robin
- Least Connection
- Weighted Least Connection
- Agent-based Adaptive
- Chained Failover (Fixed Weighting)
- Source-IP Hash
- Layer 7 Content Switching

### Sticky (Persistence) Connection Options

- Source IP (L4)
- SSL SessionID (L4)
- HTTP/HTTPS Browser-session (L7)
- HTTP/HTTPS WebClient-session (L7)
- RDP Login ID (L7)
- Port Following for mixed HTTP/HTTPS sessions

### Security Functionality

- Layer 7 Intrusion Prevention System (IPS), SNORT-Rule Compatible
- Global & per VS Black list and White list (Access Control List)
- IP address filtering
- Firewall filtering (everything forbidden except VS's)
- DDoS mitigation, including L7 rate based attacks

### Hardware Platform

- Intel Processor
- 4 X GbE Auto-negotiating, Full Duplex Eth. Ports
- Bootable DOM (No Hard Disks)
- 1 GB RAM
- Local admin via console/VGA and USB
- Dimensions: 426 x 419 x 44 mm. (1U)
- Weight ~ 13.23 lbs (6kg)
- 180W ATX power supply
- Certifications: CE, FCC Class A, UL, RoHS

\* Specifications are subject to change without prior notice.

Copyright © 2002 - 2012 KEMP Technologies, Inc. All Rights Reserved.

KEMP Technologies, Inc. ♦ 12 Old Dock Road, Yaphank, New York, 11980 ♦ +1 631 345 5292

KEMP Technologies Limited ♦ Mary Rosse Centre, Holland Road, National Technology Park, Limerick, Ireland ♦ +353 (0)61 260 101

www.KEMPTechnologies.com ♦ info@KEMPTechnologies.com